



**ONE STOP**  
DOOR SHOP



# AS-20 SLIMLINE SLIDING SYSTEM



## FEATURES

- » Minimal interlocking section perfect for maximising light
- » Multipoint locking system for enhanced security
- » Designed to improve both strength and weather resistance
- » Semi dry glazing makes it easier for installation and glass replacement
- » Extensive choice of ironmongery
- » Available as an open corner solution
- » Two, three and four track options
- » Outstanding thermal efficiency
- » Available in flat pack for site assembly

## APPLICATION

- Residential «
- Retail/commercial «
- Hospitality «

## Technical Performance

<b>Finish</b>	Marine quality polyester powder coat as standard*
<b>U Value</b>	1.6 W/m <sup>2</sup> K (When using a 1.0 W/m <sup>2</sup> K centre pane)
<b>Air</b>	Class 3, 600Pa
<b>Water</b>	Class 7a, 300Pa
<b>Wind</b>	Class AE, 2400Pa



**U Value**  
1.6W/m<sup>2</sup>k



**Water**  
300Pa




**Interlock**  
20mm



**Wind**  
2400Pa



**Max Sash Wt**  
250kg

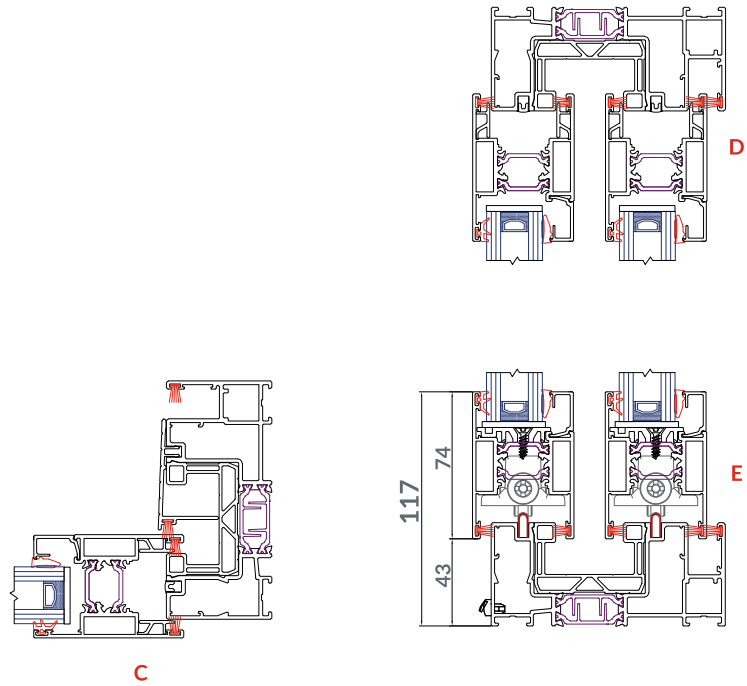
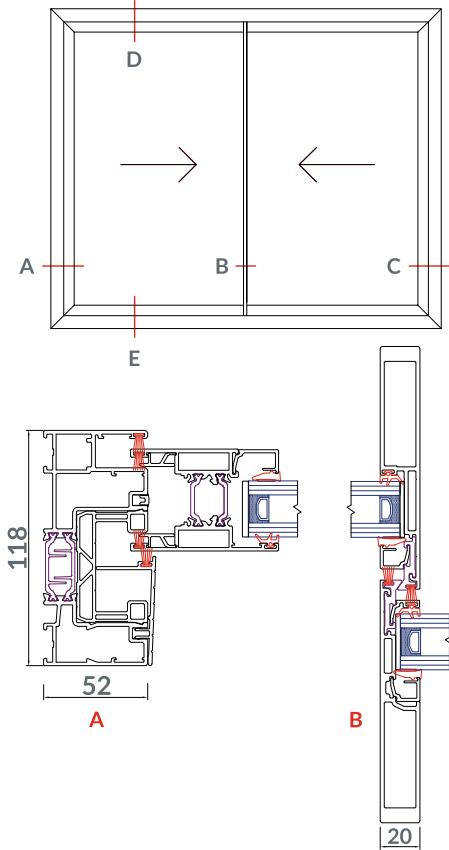


**Air**  
600Pa

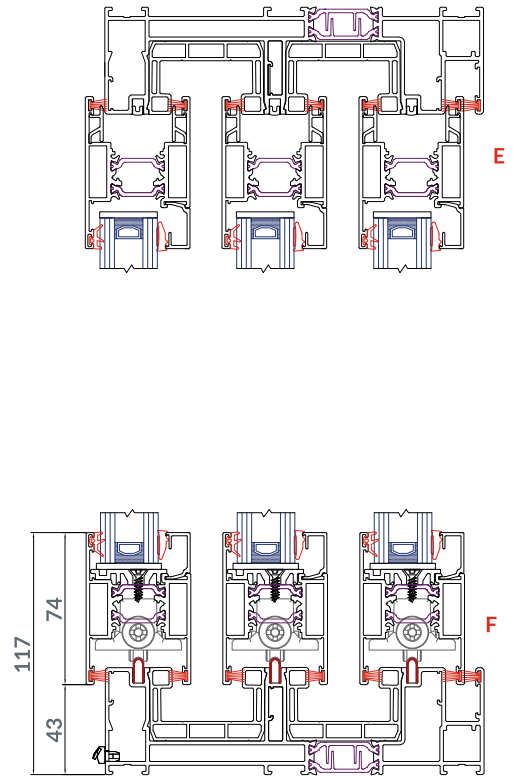
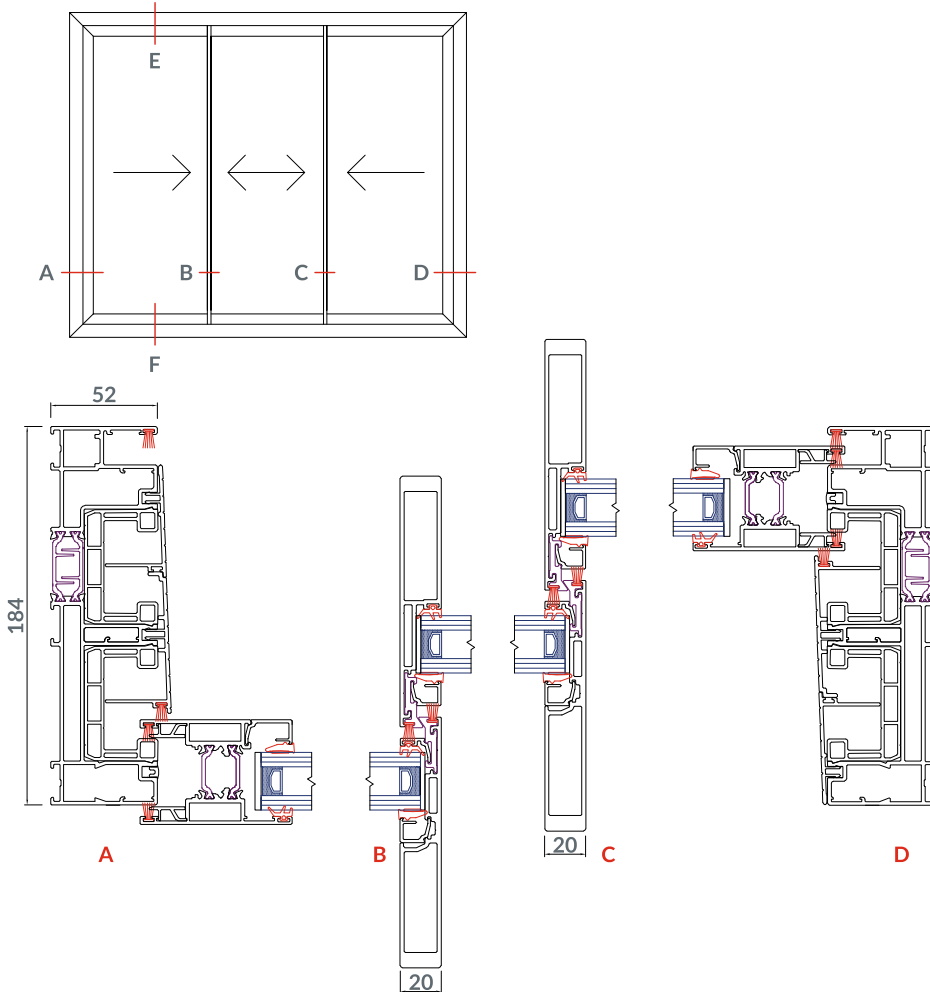


**Max Height**  
2500mm

## 2 TRACK CROSS SECTION



## 3 TRACK CROSS SECTION



020 8050 6542



sales@onestopdoor.shop



07511 865948



www.onestopdoor.shop

**One Stop Door Shop Ltd**  
 Unit 8 Byfleet Industrial Estate  
 Old's Approach, Watford,  
 WD18 9TS